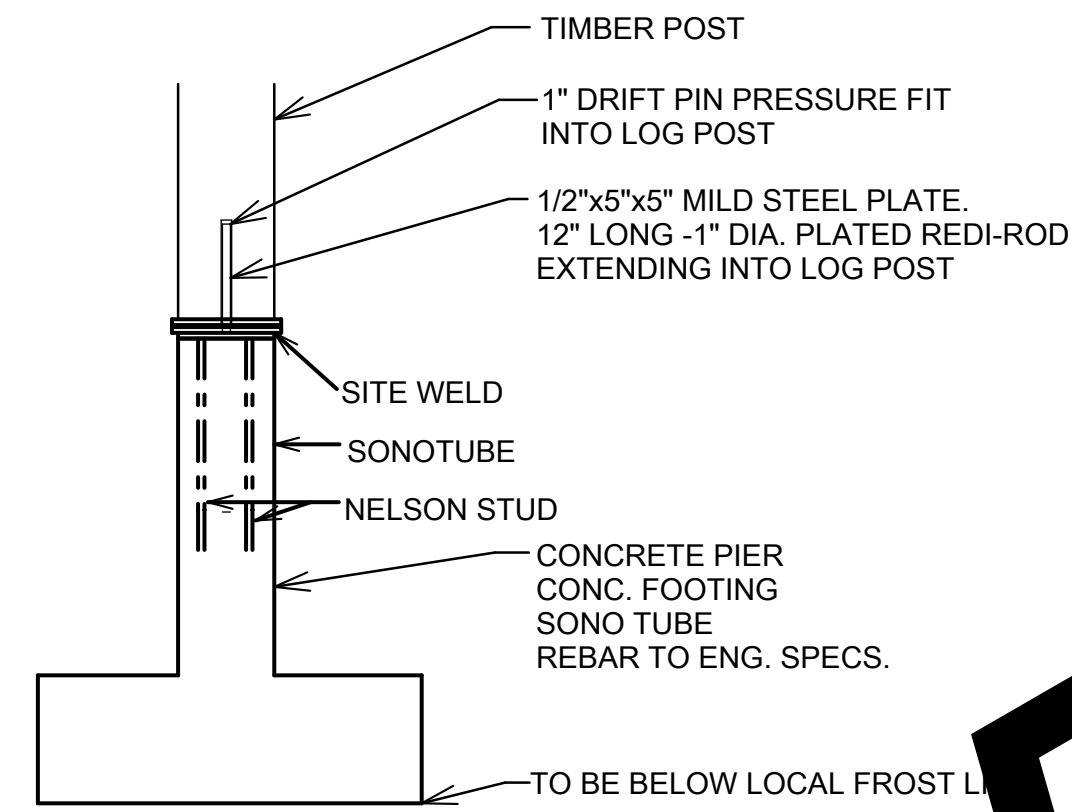


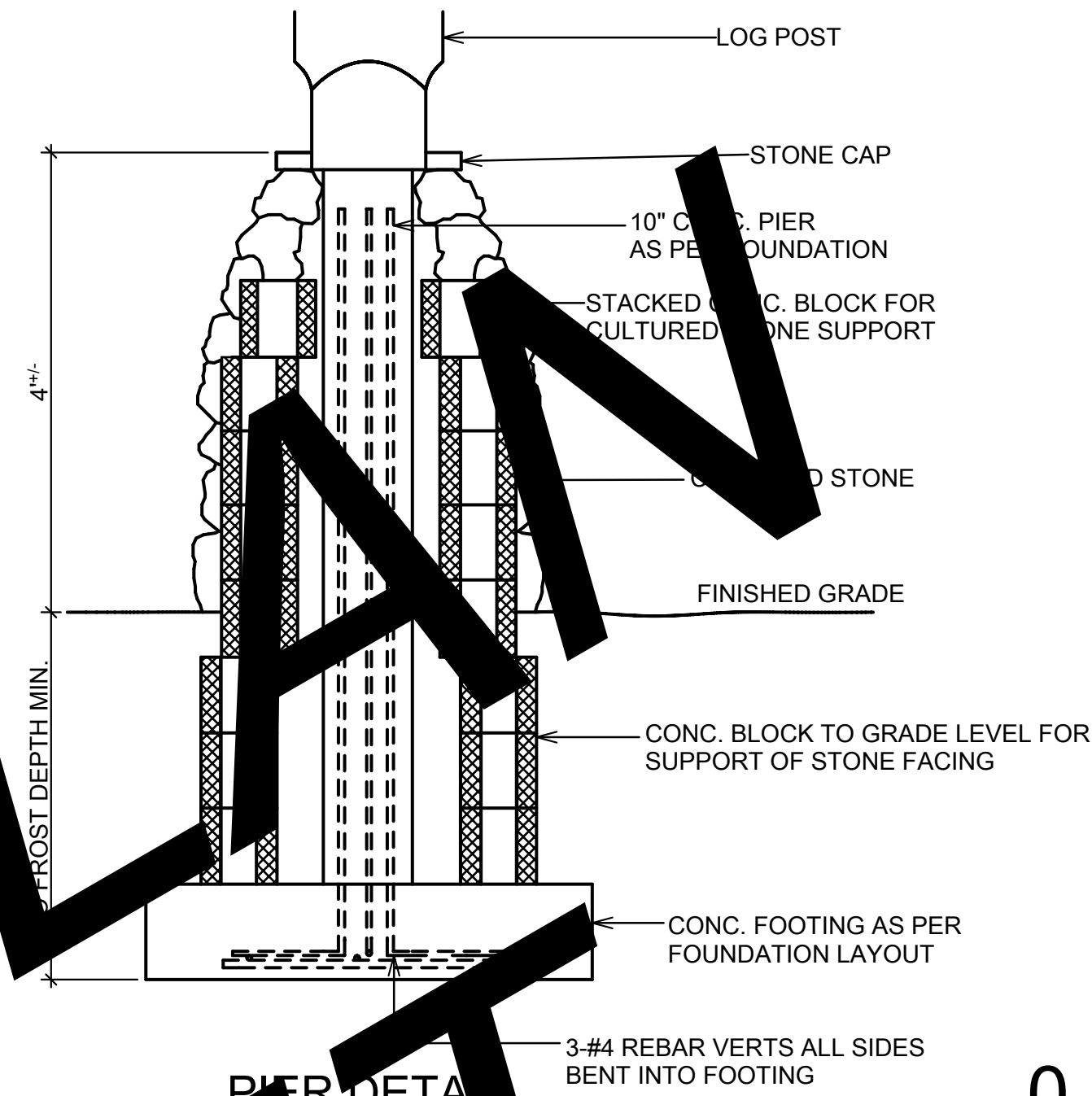
DECK BEAM / POST DETAIL

0-A



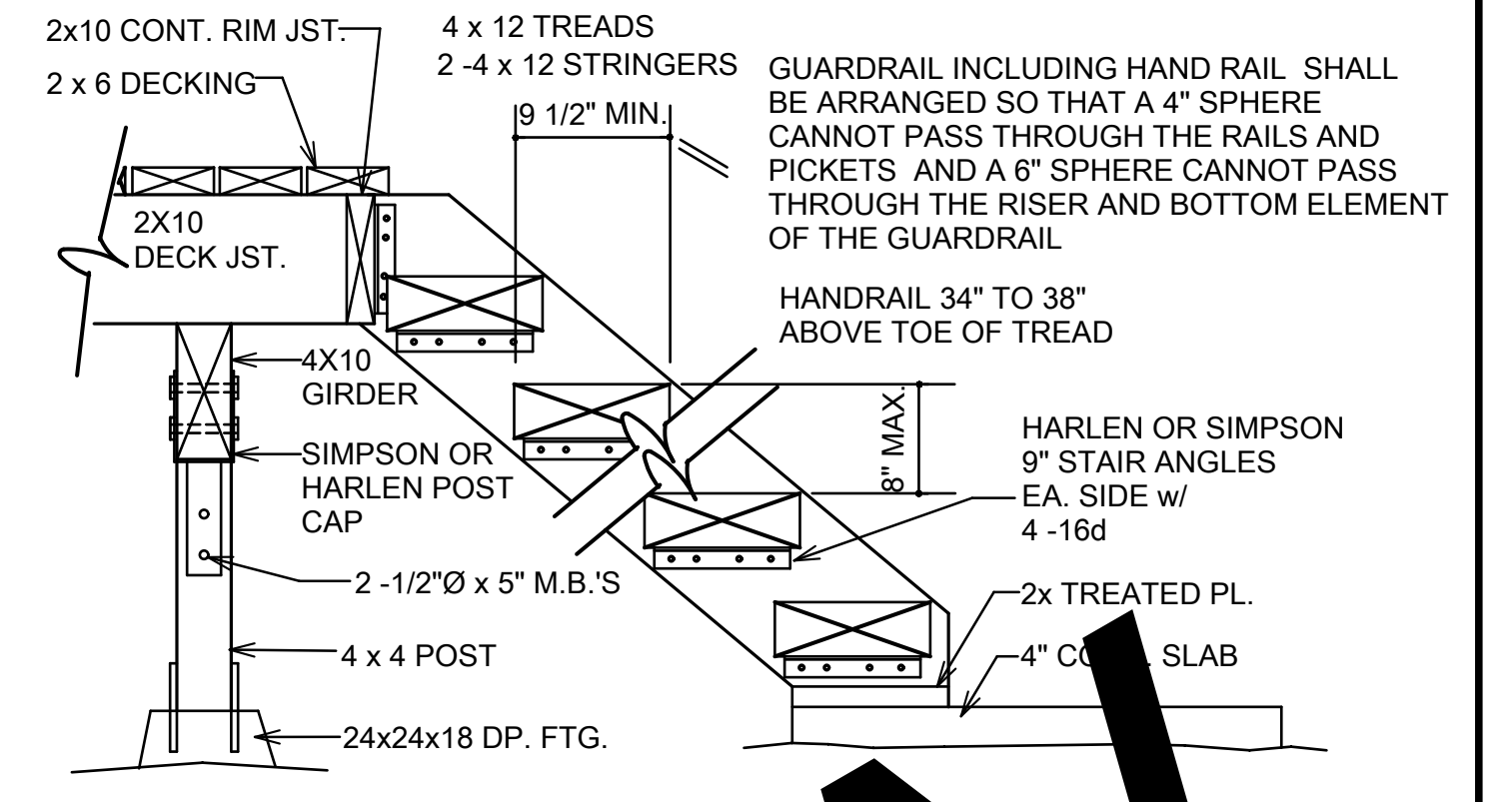
POST TO CONC. SUPPORT DETAIL

0-B



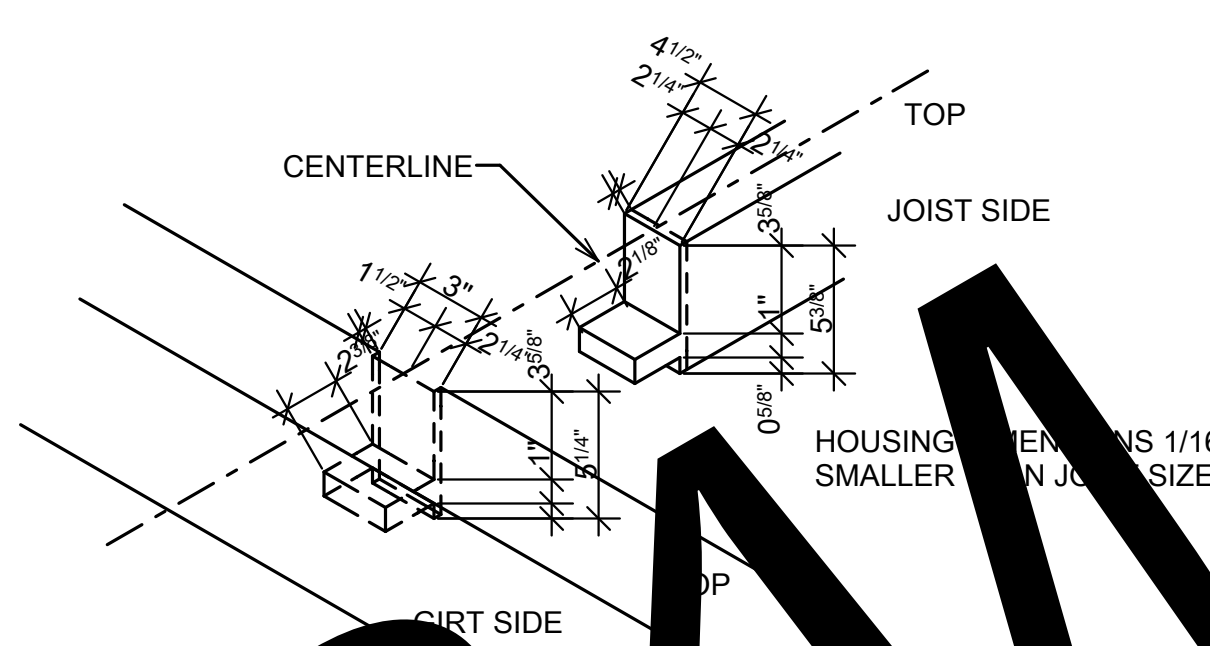
PIER DETAIL

0-C



EXTERIOR STAIR DETAIL

0-D



JOISTS TO GIRTS
SCALE: 1/4" = 1'-0"

0-E

| CONNECTION | NAILING(*1) |
|--|--|
| 1. JOIST TO WALL OR GIRDER, TOENAIL | 3-8D |
| 2. BRIDGING TO JOIST, TOENAIL TO EACH END | 2-8D |
| 3. 1" X 6" (25MM X 152MM) SUBFLOOR OR LESS TO EACH JOIST, FACE NAIL | 2-8D |
| 4. WIDER THAN 1" X 6" (25MM X 152MM) SUBFLOOR TO EACH JOIST, FACE NAIL | 3-8D |
| 5. 2" (51MM) SUBFLOOR TO JOIST OR GIRDER, BLIND AND FACE NAIL | 2-16-D |
| 6. SOLE PLATE TO JOIST OR BLOCKING, TYPICAL FACE NAIL | 16D @ 16" (406MM) O.C. |
| 7. SOLE PLATE TO JOIST OR BLOCKING, AT BRACE WALL PANEL | 3-16D PER 16" (406MM) |
| 8. STUD TO SOLE PLATE | 2-16D |
| 9. DOUBLE STUDS, FACE NAIL | 4-8D, TOENAIL OR 2-16D, END NAIL |
| 10. DOUBLE TOP PLATE, TYPICAL FACE NAIL | 16D @ 24" (610MM) O.C. |
| 11. DOUBLE TOP PLATE, LAP SPLICE | 16D @ 16" (406MM) O.C. |
| 12. BLOCKING BETWEEN RAFTERS OR RAFTERS TO TOP PLATE, TOENAIL | 8-16D |
| 13. RIM JOIST TO TOP PLATE, TOENAIL | 3-8D |
| 14. TOP PLATES, LAPS AND INTERSECTIONS, FACE NAIL | 8D @ 6" (152MM) O.C. |
| 15. CONTINUOUS HEADER TO JOISTS | 2-16D |
| 16. CONTINUOUS HEADER TO STUDS, TOENAIL | 16D @ 16" (406MM) O.C. ALONG EACH EDGE |
| 17. CONTINUOUS HEADER TO STUDS, TOENAIL | 3-8D |
| 18. CONTINUOUS HEADER TO STUDS, TOENAIL | 4-8D |
| 19. CONTINUOUS HEADER TO STUDS, TOENAIL | 3-16D |
| 20. CONTINUOUS HEADER TO STUDS, TOENAIL | 3-16D |
| 21. CONTINUOUS HEADER TO STUDS, TOENAIL | 3-8D |
| 22. CONTINUOUS HEADER TO STUDS, TOENAIL | 2-8D |
| 23. CONTINUOUS HEADER TO STUDS, TOENAIL | 2-8D |
| 24. CONTINUOUS HEADER TO STUDS, TOENAIL | 16D @ 16" (406MM) O.C. |
| 25. CONTINUOUS HEADER TO STUDS, TOENAIL | 2-16D @ EACH BEARING |
| 26. WALL SHEATHING (TO FRAMING): | |
| 1/2" (12.7MM) AND LESS | 6-D3(*3) |
| 19/32" (15MM - 19MM) | 8D(*4) OR 8D(*5) |
| 7/8" - 1" (22MM - 25MM) | 8D(*3) |
| 1 1/8" - 1 1/4" (29MM - 32MM) | 10D(*4) OR 8D(*5) |
| COMBINATION SUBFLOOR-UNDERLAYMENT (TO FRAMING): | |
| 3/4" (19MM) AND LESS | 6D(*5) |
| 7/8" - 1" (22MM - 25MM) | 8D(*5) |
| 1 1/8" - 1 1/4" (29MM - 32MM) | 10D(*4) OR 8D(*5) |
| 27. PANEL SIDING (TO FRAMING)(*2): | |
| 1/2" (12.7MM) OR LESS | 6D(*6) |
| 5/8" (16MM) | 8D(*6) |
| 28. FIBERBOARD SHEATHING(*7): | |
| 1/2" (12.7MM) | NO. 11GA>(*8) |
| 25/32" (20MM) | 6D(*4) |
| | NO. 16GA(*9) |
| | NO. 11GA(*8) |
| | 8D(*4) |
| | NO. 16GA(*9) |
| 29. INTERIOR PANELING: | |
| 1/4" (6.4MM) | 4D(*10) |
| 3/8" (9.5MM) | 6D(*11) |

(*1) - COMMON OR BOX NAILS MAY BE USED EXCEPT WHERE OTHERWISE STATED.
 (*2) - NAILS SPACED AT 6 INCHES (152MM) ON CENTER AT EDGES, 12 INCHES (305MM) AT INTERMEDIATE SUPPORTS EXCEPT 6 INCHES (152MM) AT ALL SUPPORTS WHERE SPANS ARE 48 INCHES (1219MM) OR MORE. FOR NAILING OF WOOD STRUCTURAL PANEL AND PARTICLEBOARD DIAPHRAGMS AND SHEAR WALLS, REFER TO SECTIONS 2315.3 AND 2315.4. NAILS FOR WALL SHEATHING MAY BE COMMON, BOX OR CASING.
 (*3) - COMMON OR DEFORMED SHANK.
 (*4) - COMMON.
 (*5) - DEFORMED SHANK.
 (*6) - CORROSION-RESISTANT SIDING OR CASING NAILS CONFORMING TO THE REQUIREMENTS OF SECTION 2304.3.
 (*7) - FASTENERS SPACED 3 INCHES (76MM) ON CENTER AT EXTERIOR EDGES AND 6 INCHES (152MM) ON CENTER AT INTERMEDIATE SUPPORTS.
 (*8) - CORROSION-RESISTANT ROOFING NAILS WITH 7/16-INCH-DIAMETER (11MM) HEAD AND 1 1/2-INCH (38MM) LENGTH FOR 1/2-INCH (12.7MM) SHEATHING AND 1 3/4-INCH (44MM) LENGTH FOR 25/32-INCH (20MM) SHEATHING CONFORMING TO THE REQUIREMENTS OF SECTION 2304.3.
 (*9) - CORROSION-RESISTANT STAPLES WITH NOMINAL 7/16-INCH (11MM) CROWN AND 1 1/8-INCH (29MM) LENGTH FOR 1/2-INCH (12.7MM) SHEATHING AND 1 1/2-INCH (38MM) LENGTH FOR 25/32-INCH (20MM) SHEATHING CONFORMING TO THE REQUIREMENTS OF SECTION 2304.3.
 (*10) - PANEL SUPPORTS AT 16 INCHES (406MM) [20 INCHES (508MM) IF STRENGTH AXIS IN THE LONG DIRECTION OF THE PANEL, UNLESS OTHERWISE MARKED], CASING OR FINISH NAILS SPACED 6 INCHES (152MM) ON PANEL EDGES, 12 INCHES (305MM) AT INTERMEDIATE SUPPORTS.
 (*11) - PANEL SUPPORTS AT 24 INCHES (610MM), CASING OR FINISH NAILS SPACED AT 6 INCHES (152MM) ON PANEL EDGES, 12 INCHES (305MM) AT INTERMEDIATE SUPPORTS.

SAMPLE RIGHT DESIGN
COPYRIGHT
R.C.M. CAD

NOTE: ALL DIMENSIONS TO BE VERIFIED ON SITE BY GENERAL CONTRACTOR. IT IS THE SOLE RESPONSIBILITY OF THE GENERAL CONTRACTOR TO CHECK & VERIFY ALL DIMENSIONS & SPECIFICATIONS ON THIS SET OF PLANS BEFORE STARTING CONSTRUCTION. LOCAL BUILDING CODES AND PRACTICES SHALL BE FOLLOWED. LOCAL BUILDING CODES AND PRACTICES SHALL BE FOLLOWED.

LOG BUILDER: ELK RIDGE
 CLIENT: ELK RIDGE
 TITLE: DETAILS

SCALE: 1/4" = 1'-0"
 DATE: MAY 28, 2008
 DRAWN BY: C.C.
 CHECKED BY: C.C.

REVISION: REV. 1, REV. 2, REV. 3

R.C.M. Cad Design
 Drafting Ltd.
 PHONE: (604) 850-6723 FAX: (604) 850-6734
 www.loghome-design.ca

20